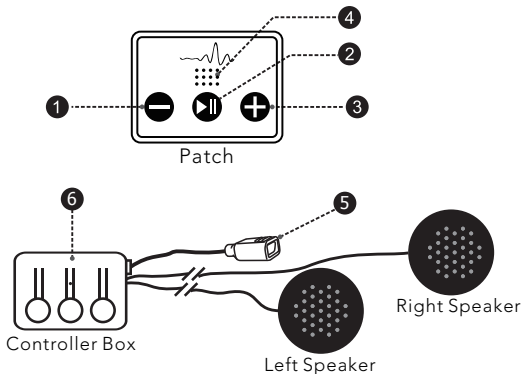


# Sleep Headphones with Bluetooth



Speakers are found inside the headband and can be adjusted over your ears by moving the materials around the speaker.



- |   |                           |   |                          |
|---|---------------------------|---|--------------------------|
| 1 | Volume Down/Previous Song | 4 | LED Status Light         |
| 2 | Play/Pause                | 5 | USB Charging Port        |
| 3 | Volume Up                 | 6 | Bluetooth Controller Box |

## Button Functions:

- **Power on:** Hold Down the ▷|| button for 3 Seconds
- **Power off:** Hold Down the ▷|| button for 3 Seconds
- **Increase Volume:** short press + Button
- **Decrease volume:** short press - Button
- **Previous Music:** Hold press the - Button
- **Next Music:** Hold press the + button
- **Play Music:** Short press ▷|| button
- **Pause Music:** Short press ▷|| button

## 1. How to Charge:

1. Turn the headband inside out and find the charging port #5 in diagram at the opening.
2. Connect USB charging cable provided to the charging port and the other side of the cable to a power source ( Computer or Power Socket ).
3. LED light on the front of the headband will turn red while charging and change to blue when fully charged.

## 2. Battery Note:

- It will take approximately 2 hours to be fully charged.
- Charging cannot be done at the same time as listening to sounds.
- Reset for operation can be done while charging if required.
- Battery when fully charged will last approximately up to 9 hours.
- Red light will flash 5 times if the battery is low.

## 3. LED Indicator Chart:

STATUS	INDICATOR
Bluetooth Pairing Mode	Red and blue light flash alternately
Bluetooth Connected	Blue light flashes slowly
Charging	Solid red light
Charging Complete	Solid blue light

## 4. Pair with Bluetooth Device:

1. Hold Down the ▷|| button for 3 Seconds until Status light #4 starts flashing red and blue.
2. Turn the Bluetooth function on the device to be paired.
3. Select, on a paired device, the device name "Musical Headband" from the list of found devices.
4. The passcode is 0000 if asked.
5. Blue light will flash slowly if successfully paired with the headband.

## 5. Play Music with Bluetooth Pairing:

1. Hold down the Play button quickly to start music or pause.
2. Adjust Volume by pressing + Up or – Down with a short press of a button.

### **Note:**







After successfully pairing your mobile phone, you will need to open a music player on your phone to play music.

## 6. Troubleshooting:

1. Ensure the product is fully charged, switched on, paired, or connected to the memory card.
2. If using Bluetooth, make sure your device is 10 meters/33 feet in range and no obstructions between devices.
3. Turn off all past Bluetooth devices that were previously connected to the device.

## 7. Washing Guidelines:

Please use the inside pouch/opening on the back of the headband to access and remove the electronic parts before hand washing the product.

	Wash with cold water		DO NOT dry clean
	Hand wash ONLY		DO NOT bleach
	DO NOT tumble dry		DO NOT iron

## 8. Specifications:

- Bluetooth Version: V5.2
- Frequency: 2.402 GHz – 2.480 GHz
- Transmission Range: 20M/66FT
- Rated Power: RMS 10mW x 2
- Speaker Unit: 32Ω x 20mm
- Battery: 3.7V 300mAh Rechargeable Li-Polymer Battery
- Charge Time: 2 Hours
- Battery Length: Approx 35 Hours

## **! Dangers of Injury:**

- Keep the product and the package away from children and animals, as they can swallow small parts.
- Supervise children using the product . It is not a toy.
- Always maintain a gap of at least 10 cm between the headphones and a pacemaker or an implantable cardioverter defibrillator (ICD) as the product generates magnetic fields.

## **! Danger of Fire:**

- **Caution!** Don't expose the headphones to any high temperatures over 70 degrees Celsius ( Like hair dryers, heating, prolonged sunlight etc..). The battery inside the headphones may overheat.
- Only charge the headphones in an ambient temperature area from 10 degrees Celsius to 40 degrees Celsius.
- Do not crush or pierce the battery! Do not expose the battery to high pressure, as this may cause an internal short-circuit and overheating.

## **Customer Support:**

Please contact [info@mywaves.tech](mailto:info@mywaves.tech) if you have further questions.